

» OPERADOR ELECTROMECHANICO LATERAL USO CONTINUO MARCA ELSAMEC MOD.TAURUS.



Taurus

The motor for rolling shutters without compensation springs

Modello Taurus 7M					
MONOFASE CON ACCRUX - AB					
V-230	Hz 50	A 2,3	W 630		
IP 54	cl. F	veloc. 0,87	r.p.m. 49		
Coppia Nm 70		Servizio temporaneo 1300sec. 90%			

Modello Taurus 12M					
MONOFASE CON ACCRUX - AB					
V-230/400	Hz 50	A 2,3/2,4	W 615		
IP 54	cl. F	veloc. 0,87	r.p.m. 49		
Coppia Nm 70		Servizio temporaneo 1200sec. 80%			

Modello Taurus 18M					
MONOFASE CON ACCRUX - AB					
V-230/400	Hz 50	A 3,5/2	W 1100		
IP 54	cl. F	veloc. 0,75	r.p.m. 49		
Coppia Nm 120		Servizio temporaneo 450sec. 28%			



elsamec
AUTOMATISMI PER SERRAMENTI



V03.20

» OPERADOR ELECTROMECHANICO LATERAL USO CONTINUO MARCA ELSAMEC MOD.TAURUS.



Since 1972, we manufacture motors for all types of rolling shutters. The extreme attention paid to production, the constant quality control during each manufacturing phase and the careful testing of each piece build up the strength and the pride of our company. Keeping constantly up-to-date with technological innovations, we have maintained Simplicity as our manufacturing philosophy, performing all production phases within our plant.

The Motor Elsamec TAURUS is therefore reliable, versatile and secure, with a very good quality/price ratio and top-level technological features. TAURUS Elsamec is the right answer for any request of the market.



In the pictures: production stages



» OPERADOR ELECTROMECHANICO LATERAL USO CONTINUO MARCA ELSAMEC MOD.TAURUS.

TAURUS



TAURUS, the flange-mounted motor made by ELSAMEC, is suitable for rolling shutters without compensation springs, for residential and industrial use. The motor is placed external, and parallel to the axle, thus reducing to the minimum the space on the side: this factor facilitates the installation and any eventual maintenance which may be needed afterwards.

Taurus can pull very large shutters, with weights up to 1.000 kgs and can be used in very many ways: the lifting capacity varies according to transmission gear ratio. The range of models covers several applications: the model TAURUS 7-M is a single-phased motor designed for high-frequent use with 70 Nm torque with transmission gear 1:5; the model TAURUS 7 is a three-phased motor designed for high-frequent use with 70 Nm torque with transmission gear 1:7; the model TAURUS 12 three-phased is designed for heavy industrial use and has a torque of 120 Nm with transmission gear 1:7.

The electroreducer is composed by:

an electric motor unit of very generous capacity; a two-stage epicycloidal speed reducer unit, very strong and reliable; high-security electromagnetic brake; a limit-switch system, stable and very easy to set up, encased in an IP54 box; this box is also outfitted for electrical cabling;



LIMIT-SWITCH system: it allows micrometric progressive regulation of the shutter's excursion.



» OPERADOR ELECTROMECHANICO LATERAL USO CONTINUO MARCA ELSAMEC MOD.TAURUS.



intensive use

TAURUS 7M cod. 74260000
(EA-00003-00)

TAURUS 7-M represents a new generation of side motors with *SINGLE-PHASED* 230V supply and *INTENSIVE USE*, with service factor 60% (about 20-25 mins of continuous use, depending on environmental temperature level). The torque has been increased to 70 Nm, corresponding, depending on the side-flange and diameter of shaft used, to a range of lifting capacity *up to 500 kg.* of curtain weight. The new on-board command *ACRUX AB* features a start-ramp and a stop-ramp: that allows, with decreasing speed, softer starts and softer stops. The command-board also adjusts dynamically the power frequency, according to the lifting capacity requested. On **TAURUS 7-M** the technical characteristics of the electrobrake have been improved.

ACRUX AB cod. 95120000 **(EA-00050-00)**



Single-phased/Three-phased on-board inverter with low voltage command, manual and single-touch command

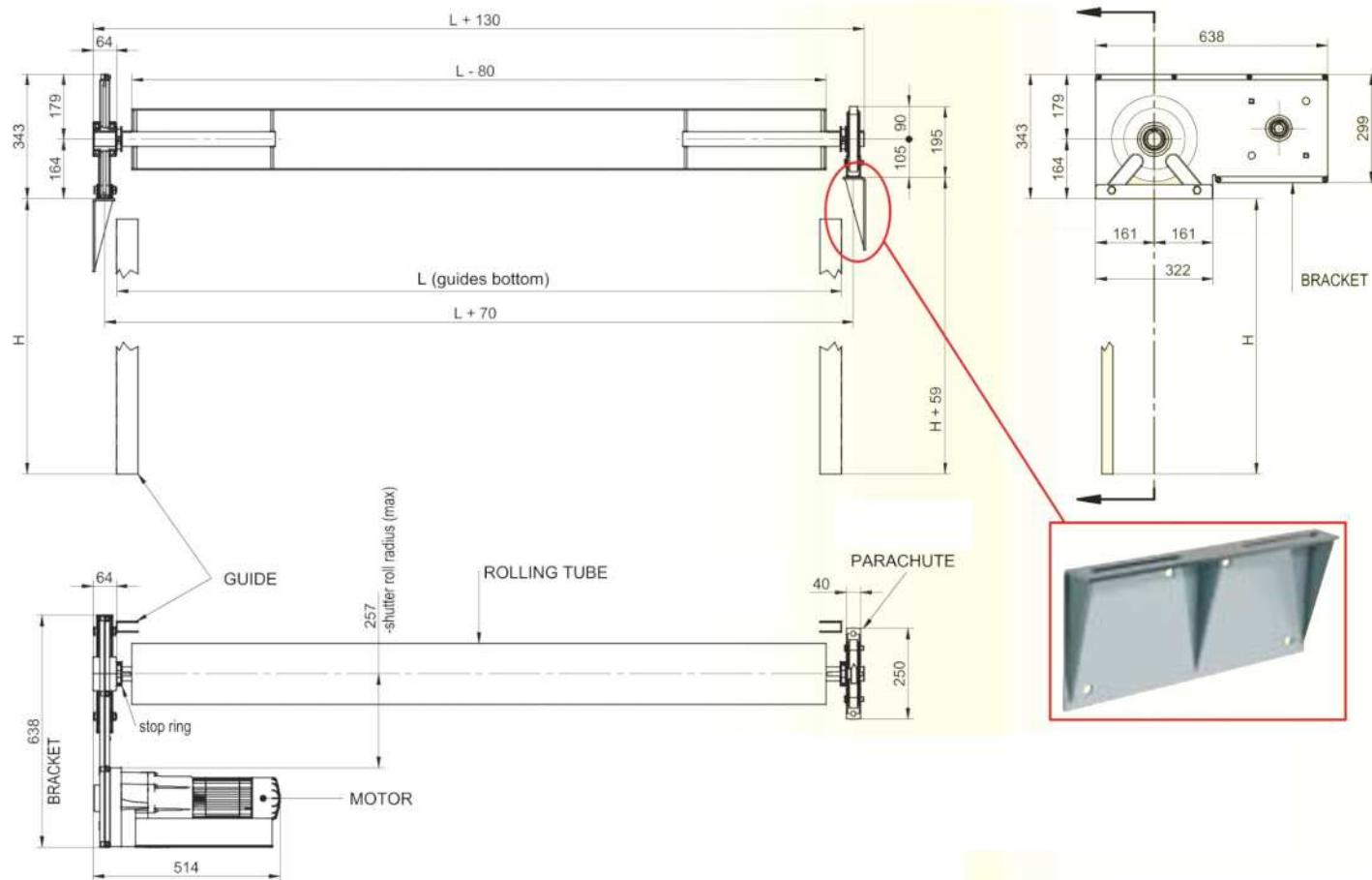


» OPERADOR ELECTROMECHANICO LATERAL USO CONTINUO MARCA ELSAMEC MOD.TAURUS.

Installation of the motor on a left-hand side mounting (seen from inside); the system can anyhow accomodate both a left-hand side or right-hand side mounting.

INSTALLATION WITH WALL SUPPORTS

Taurus
RAPP. 1:5



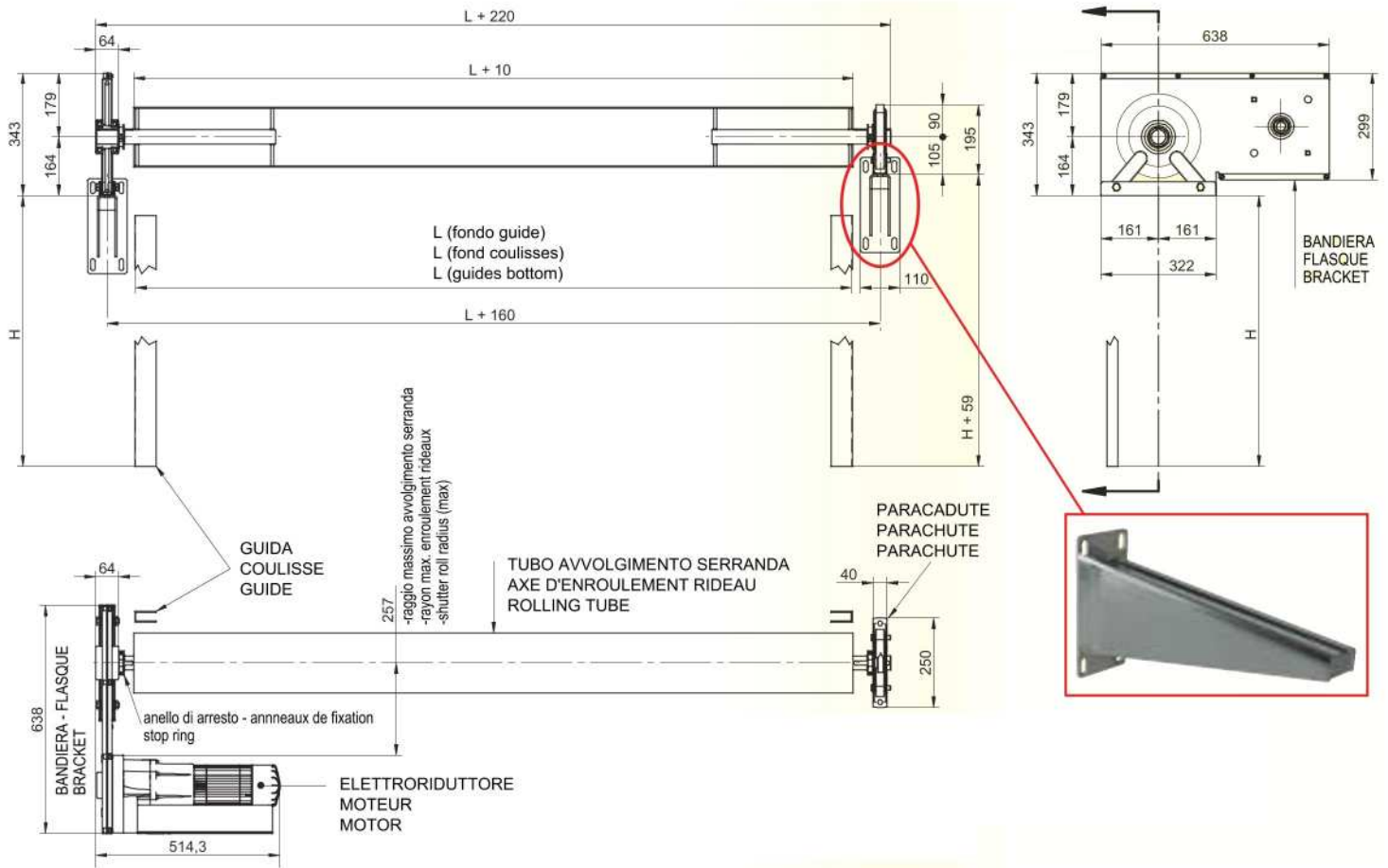
Measures of brackets 1:5 and parachute F5



» OPERADOR ELECTROMECHANICO LATERAL USO CONTINUO MARCA ELSAMEC MOD.TAURUS.

INSTALLATION WITH PILLAR SUPPORTS

Taurus
RAPP. 1:5



Measures of brackets 1:5 and parachute F5

Measures of brackets 1:7 and parachute F7



» OPERADOR ELECTROMECANICO LATERAL USO CONTINUO MARCA ELSAMEC MOD.TAURUS.



semi intensive use

TAURUS 12M cod. 74290000 (EA-00004-00)

TAURUS 7 side motor with *THREE-PHASED 230/400V* supply with *INTENSIVE USE* with service factor 60% (about 20-25 mins of continuous use, depending on environmental temperature level), with on-board *METEOR AB* command. The torque is 70 Nm, corresponding, depending on the side-flange and diametre of shaft used, to a range of lifting capacity up to 500 kg. of curtain weight.



semi intensive use

TAURUS 18M cod.74300000 (EA-00005-00)

TAURUS 12 side motor conceived for industrial use, with *THREE-PHASED 230/400V* supply with *NON INTENSIVE USE*, with on-board *METEOR AB* command. The torque is 120 Nm, corresponding, depending on the side-flange and diametre of shaft used, to a range of lifting capacity up to 1.000 kg. of curtain weight.

ACRUX AB cod. 95120000 (EA-00050-00)



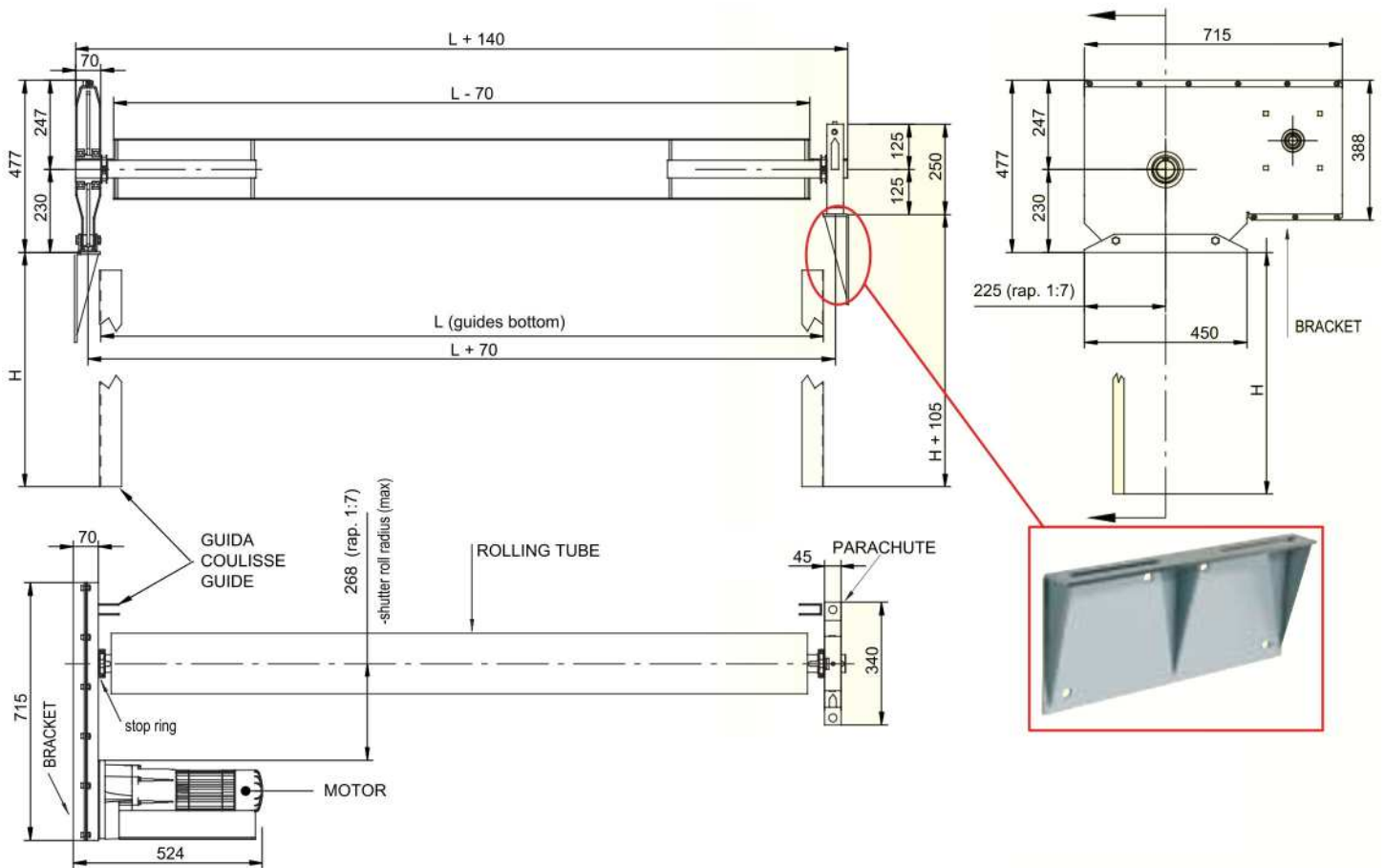
Single-phased/Three-phased on-board inverter with low voltage command, manual and single-touch command



» OPERADOR ELECTROMECHANICO LATERAL USO CONTINUO MARCA ELSAMEC MOD.TAURUS.

Installation of the motor on a left-hand side mounting (seen from inside); the system can anyhow accomodate both a left-hand side or right-hand side mounting.

INSTALLATION WITH WALL SUPPORTS

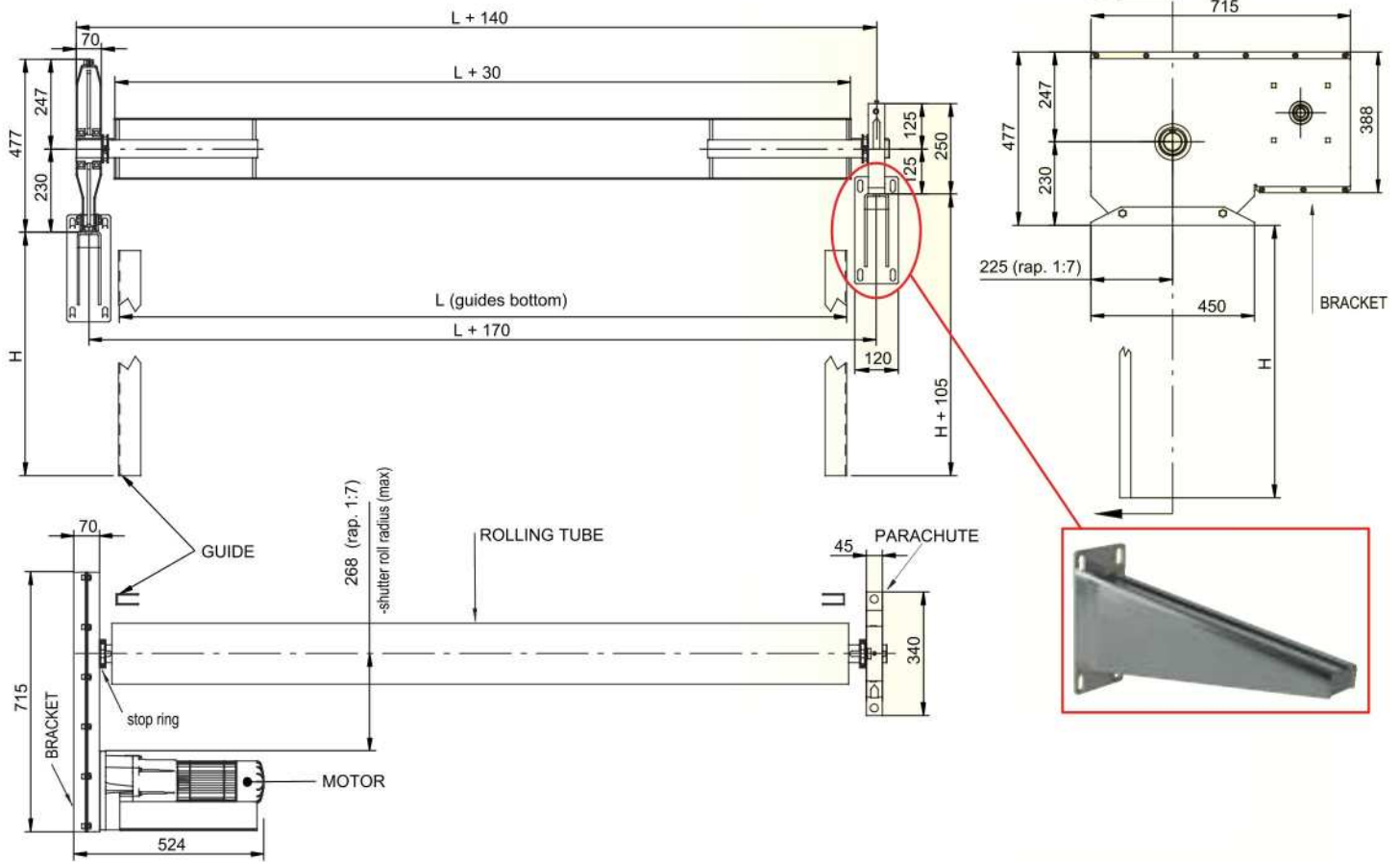


Measures of brackets 1:7 and parachute F7



» OPERADOR ELECTROMECHANICO LATERAL USO CONTINUO MARCA ELSAMEC MOD.TAURUS.

INSTALLATION WITH PILLAR SUPPORTS



Measures of brackets 1:7 and parachute F7



» OPERADOR ELECTROMECHANICO LATERAL USO CONTINUO MARCA ELSAMEC MOD.TAURUS.
MOTOR'S EQUIPMENT GEAR RATIO 1:5



cod. 76150001 (EA-00062-00)

Motor bracket Transmission gear ratio 1:5.
The side flange is the base of the hoisting system, and accomodates the final gear: Pinion, Crown and Transmission chain.



cod. 76510000

Support for motor-side bracket 1:5



cod. 76530000

Wall-in support motor-side bracket 1:5



cod. 76180000 (EA-00067-00)

Axle Ø 40 with tongue for bracket rap. 1:5



Flanges couple hole ø 40mm.

cod.	76210000	76250000	76270000	76310000	76330000	76370000	76390000	76410000
ø flanges	124,5	149,5	158,8	167,3	182,4	206,8	231,4	259,9
ø tube	133x4	159x4,5	168,3x4,5	177,8x5	193,7x5,4	219,1x5,9	244,5x6,3	273x6,3



cod. 76740000 (EA-00070-00)

Stop ring for axle Ø 40



» OPERADOR ELECTROMECHANICO LATERAL USO CONTINUO MARCA ELSAMEC MOD.TAURUS.
MOTOR'S EQUIPMENT GEAR RATIO 1:7



cod. 76170000 (EA-00063-00)

*Motor bracket Transmission gear ratio 1:7
The side flange is the base of the hoisting system, and accomodates the final gear:
Pinion, Crown and Transmission chain.*



cod. 76520000

Support for motor-side bracket 1:7



cod. 76540000

Wall-in support motor-side bracket 1:7



cod. 76190000 (EA-00068-00)

Axle \varnothing 50 with tongue for bracket rap. 1:7



Flanges couple hole \varnothing 50mm.

cod.	76210000	76250000	76270000	76310000	76330000	76370000	76390000	76410000
\varnothing flanges	124,5	149,5	158,8	167,3	182,4	206,8	231,4	259,9
\varnothing tube	133x4	159x4,5	168,3x4,5	177,8x5	193,7x5,4	219,1x5,9	244,5x6,3	273x6,3

cod. 76750000 (EA-00071-00)

Stop ring for axle \varnothing 50



» OPERADOR ELECTROMECHANICO LATERAL USO CONTINUO MARCA ELSAMEC MOD.TAURUS.

MANUAL OVERRIDE

SIMPLE, IMMEDIATE RELIABLE

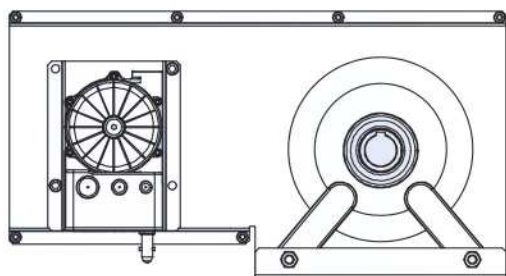
The Manual Override of TAURUS gives the advantage of being inserted at all times; in case of emergency manoeuvring by hand, the override does not need to be geared (patented system), yet it does not interfere during normal functioning. The motor is supplied ready for receiving the selected hand override.

When fixing the motor to the bracket pay attention to:

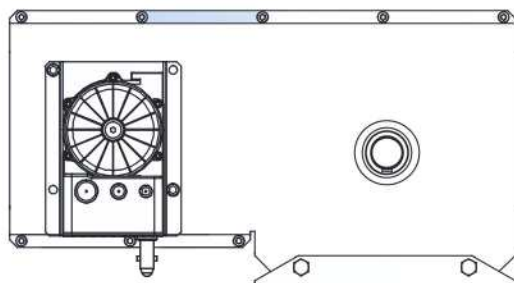
- if the chosen hand override is by handle, the pivot must be in **vertical position (pict. 1)**.
- if the chosen hand override is by chain, the pivot must be in **horizontal position (pict. 2)**.

fig. 1

vertical position

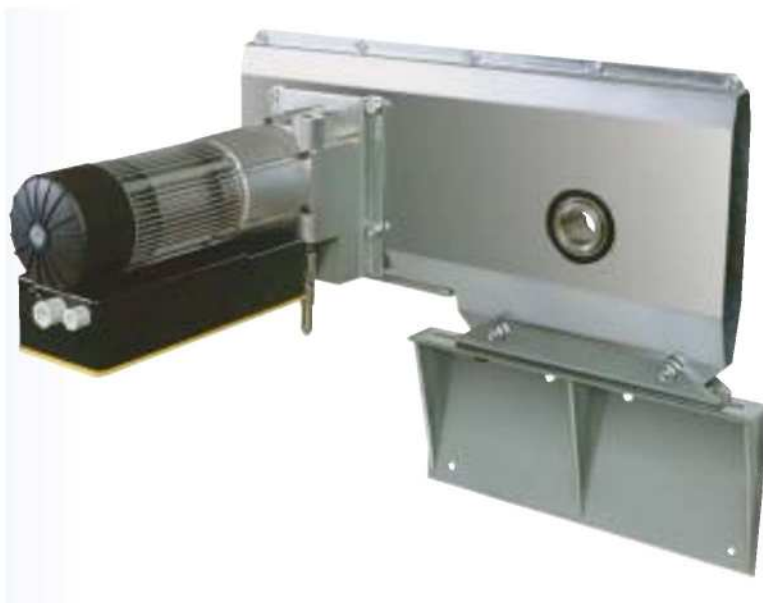


Motor bracket 1:5



Motor bracket 1:7

Manual override with removable swinging handle

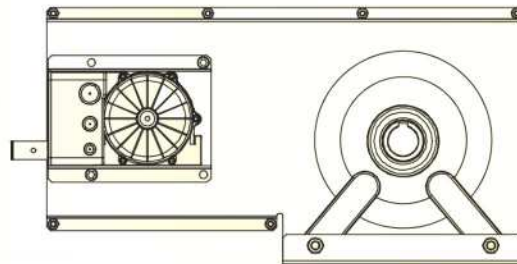


» OPERADOR ELECTROMECHANICO LATERAL USO CONTINUO MARCA ELSAMEC MOD.TAURUS.

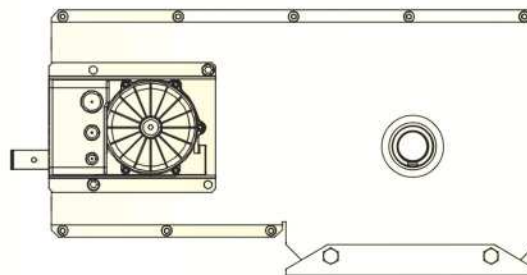
fig. 2

horizontal position

Manual override with chain system



Motor bracket 1:5.



Motor bracket 1:7

cod. 76110000 (EA-00058-00)

Set for hand override (bar not included)



cod. 76120000 (EA-00056-00)

Set for chain emergency operation for all models



(EA-00057-00)

cod. 76580000

Chain for manual override per metre



V03.20

» OPERADOR ELECTROMECHANICO LATERAL USO CONTINUO MARCA ELSAMEC MOD.TAURUS.

PARACHUTE SYSTEMS



40/900 max torque 900Nm

cod. 76940009
(EA-00073-00)



50/1200 max torque 1200 Nm
50/1500 max torque 1500 Nm

cod. 76950012
(EA-00074-00)

cod. 76950015
(EA-00074-00)



» OPERADOR ELECTROMECHANICO LATERAL USO CONTINUO MARCA ELSAMEC MOD.TAURUS.
ELECTRONIC CONTROL-BOARDS



cod. 79230000 MODULO INTERFACCIA (EA-00051-00)
Connection module between METEOR AB and PEGASO/PROGRESS
(impulse command - remote control - securities - etc.)

RainDrop



cod. 77180000 Art. 1137
Surface key-switch
with european cylinder

Selective



cod. 77760000 Art. 1139
Surface key-switch



cod. 77310000 Art. 1820 (EA-00060-00)
Safety case

MOTORS TECHNICAL SCHEME

	Potenza assorbita W	Assorbimento motore A	Tensione alimentazione V	Frequenza Hz	Velocità di rotazione/1'	Velocità di avvolgimento tubo serranda/1'	
	Puissance W	Amperage A	Tension V	Frequence Hz	TOUR/MIN.	Vitesse rotation tube /1'	
	Power W	Amperage A	Voltage V	Frequency Hz	R.P.M.	Tube rotation speed /1'	
						rapp. 1:5	rapp. 1:7
TAURUS 7-M	650	2,5	230	50	49	9,8	7
TAURUS 7	615	2,3/1,34	~3-230/400	50	49	9,8	7
TAURUS 12	1100	3,6/2	~3-230/400	50	49	9,8	7

	Sfasamento cosfi	Tempo di servizio temporaneo S	Classe di protezione	Classe di isolamento del motore	Coppia in uscita Nm
	Disphasement cosfi	% Service S	Classe IP	Classe d'isolation	Couple Nm
	Disphasement cosfi	% Services S	IP Rating	Insulation class	Torque Nm
TAURUS 7-M	0,67	60	IP54	F	70
TAURUS 7	0,67	60	IP54	F	70
TAURUS 12	0,76	25	IP54	F	120

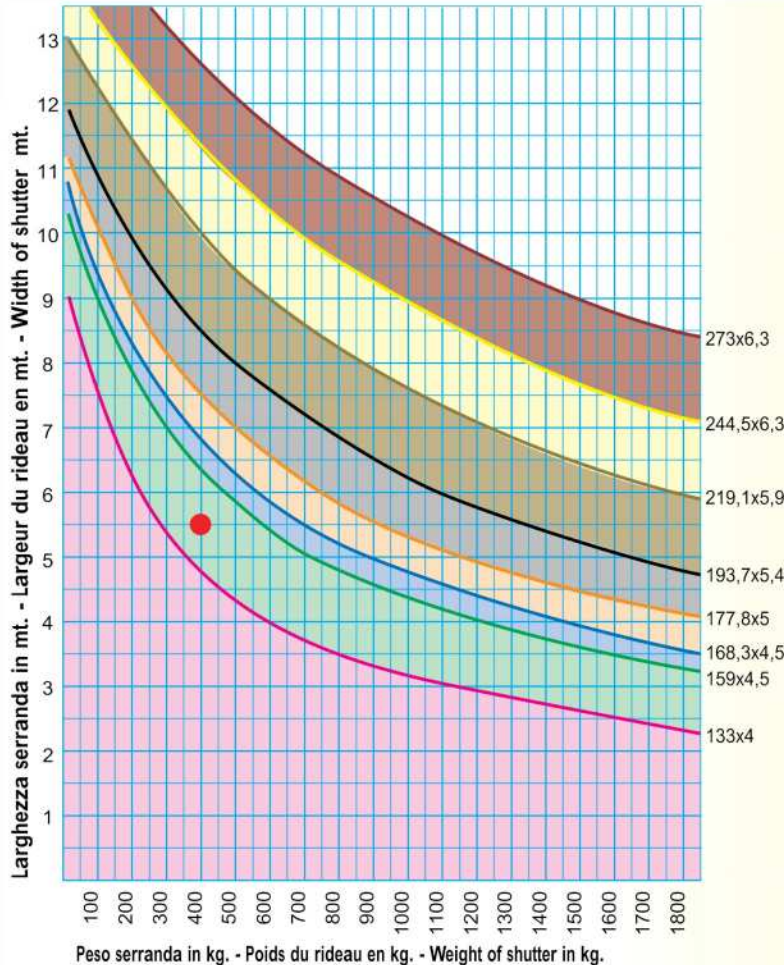


V03.20



» OPERADOR ELECTROMECHANICO LATERAL USO CONTINUO MARCA ELSAMEC MOD.TAURUS.

DIAGRAM OF PERFORMANCES OF DIFFERENT AXLES



In order to choose the appropriate motor, increase the actual weight of shutter by 25% (accounting for friction), and consider the requirements of installation (single-phase, three-phase, frequent use etc.).
EXEMPLE: A shutter measuring 5,5 mtrs width, 400 kgs. weight, non-frequent use. From the diagram, the range of axle results to be 159mm. diam.
 The motor to choose is a TAURUS 7-M with transmission gear 1:7 if single-phase; or if three-phase TAURUS 12 with transmission gear 1:5 or higer.

Campo d'applicazione - Domain d'application - Range of application Ø133 Ø159 Ø168,3 Ø177,8 Ø193,7 Ø219,1 Ø244,5 Ø273

Tabella di sollevamento in Kg
 Tableau de soulèvement en Kg
 Lifting capacity chart in Kg

		Ø tubo mm - Ø tube en mm - Ø tube in mm																
		133		159		168,3		177,8		193,7		219,1		244,5		273		
		Forza sollevam.	Peso max serranda	Forza sollevam.	Peso max serranda	Forza sollevam.	Peso max serranda	Forza sollevam.	Peso max serranda	Forza sollevam.	Peso max serranda	Forza sollevam.	Peso max serranda	Forza sollevam.	Peso max serranda	Forza sollevam.	Peso max serranda	
		Force de soulev.	Poids max rideau	Force de soulev.	Poids max rideau	Force de soulev.	Poids max rideau	Force de soulev.	Poids max rideau	Force de soulev.	Poids max rideau	Force de soulev.	Poids max rideau	Force de soulev.	Poids max rideau	Force de soulev.	Poids max rideau	
		Lifting capacity	Max weight shutter	Lifting capacity	Max weight shutter	Lifting capacity	Max weight shutter	Lifting capacity	Max weight shutter	Lifting capacity	Max weight shutter	Lifting capacity	Max weight shutter	Lifting capacity	Max weight shutter	Lifting capacity	Max weight shutter	
Rapporti di trasmissione finale Rapports de transmission Transmission gear ratio	1:5	TAURUS 7-M	526	421	440	352	416	333	394	315	361	289	319	255	286	229	256	205
		TAURUS 7	526	421	440	352	416	333	394	315	361	289	319	255	286	229	256	205
		TAURUS 12	902	722	755	604	713	570	675	540	620	496	548	438	491	393	440	352
1:7	TAURUS 7-M	737	590	616	493	582	466	551	441	506	405	447	358	401	321	359	287	
	TAURUS 7	737	590	616	493	582	466	551	441	506	405	447	358	401	321	359	287	
	TAURUS 12	1263	1010	1057	846	998	798	945	756	867	694	767	614	687	550	615	492	



V03.20